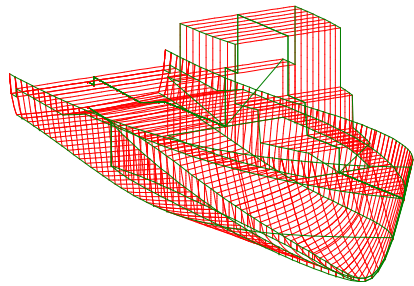


# HAWAII MARINE COMPANY

NAVAL ARCHITECTURE,  
MARINE ENGINEERING,  
& COMPUTER AIDED  
DRAFTING & ENGINEERING



45 - 302 MAKALANI STREET  
KANEHOE, HI 96744 - 2819

PHONE/FAX (808) 247-6443  
CELL PHONE (808) 291-0348  
EMERGENCIES (808) 235-0870

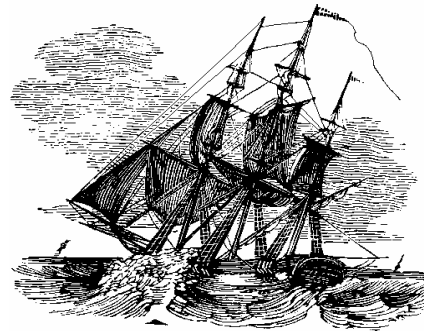
E-MAIL: [bt@atah.net](mailto:bt@atah.net)

WEB SITE AT:  
[www.hawaii-marine.com](http://www.hawaii-marine.com)

Hawaii Marine Company provides naval architectural, marine engineering, and computer aided drafting and engineering services to the commercial, recreational, and governmental sectors of the maritime community. This firm makes special efforts to comply with U. S. C. G. Regulations and American Bureau of Shipping (and other classification societies) Rules.

Since its establishment in 1978, this firm has earned a reputation for reliable and excellent work. Additionally, the company's operating policies clearly indicate that operator and vessel safety are primary concerns.

From its very beginning this firm has consistently demonstrated an ability to solve complex marine design and construction problems. In this process the firm's highly qualified engineer draws upon a large in house marine library and an extensive array of computer equipment and software. Computer usage enhances the accuracy and scope of services provided.

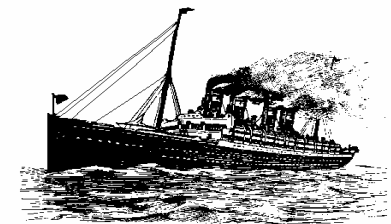


## Vessel Types

- Fishing Boats and Work Boats
- Tugs, Barges, & Vessels with Cranes
- Tour Boats & Large Passenger Boats
- Commercial Dive Boats
- Utility Boats and Cargo Vessels
- Motor and Sailing Yachts
- Catamarans, Floating Dry-docks, Sampans, Polynesian Canoes, Ramps
- Coast Guard, Navy & Military Sealift Command Vessels
- Steel, Aluminum, Wood & Fiberglass

## Engineering Services

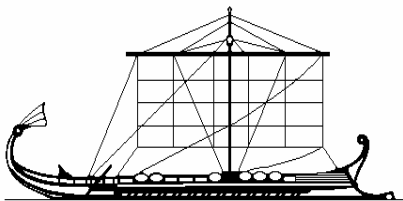
- Naval Architecture - structures, stability, resistance and arrangements
- Marine Engineering - piping, powering machinery layout and electrical wiring diagrams
- Marine Drafting - computer aided drafting and hand drafting
- Regulatory Compliance can be to USCG, ABS, ABYC, or other rules and standards
- Design Services - both preliminary and detailed design, specifications and assistance with owner's requirements



They that go down to the sea in ships, that do business in great waters; These see the works of the Lord, and his wonders in the deep.  
Psalm 107:23-24

## Specific Services Offered

- Engineering for Vessel Modifications, Conversions, & New Construction
- Vessel & Site Inspections
- Engineering Reports and Letters
- Arrangement Drawings
- Lines Drawings
- Curves of Form
- Cross Curves of Stability
- Trimming Analysis
- Intact & Damaged Stability Analysis
- Curves of Statical Stability
- Scantling Analysis to First Principles and A. B. S. Requirements
- Overall Structural Analysis
- Midship's Section Modulus
- Longitudinal Strength Calcs.
- Shaft Sizing Calculations
- Weights and Moments Analysis
- Deadweight Surveys
- Simplified and Normal Stability Testing with Reports to USCG
- Detailed Structural Drawings including Weld Symbols
- Piping & Vent Drawings
- Bill of Materials
- Project Management
- Subcontractor Coordination



## Interesting Assignments

- Stability Testing & Analysis for 110' Work Boat and 100' Z-Drive Tug
- Deadweight Survey Calcs., Stability Analysis, and Detailed Structural Modifications for 110' TWR
- Completed Stability & Structural Analysis for Boats and Barges with Cranes and Deck Cargo
- Worked on NAVSEA Certification for a 517' Steel Floating Drydock
- Powering Calculations for Planing and Displacement Vessels

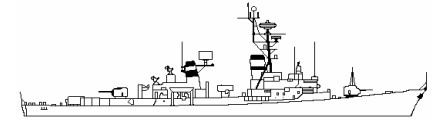
## Vessel Design Experience

- Commercial Fishing Vessel, 100' Steel
- Commercial Fishing Vessel, 79' Steel
- Passenger River Boat, 72' Steel
- Passenger Catamaran Float, 60'
- Dragon Boat, 39' Wood & Epoxy
- Commercial Fishing Vessel, 37' Steel
- Commercial Dive Tour Boat, 32' Fiberglass & Wood, Catamaran
- Dive Tour Boat, 27' Fiberglass
- Sampan Skiff, 12' Wood & FG
- Utility Catamaran, 12' Wood & FG



## Customer Benefits

- Assistance with Conceptual and Detailed Design for Repairs, Conversions, & New Construction
- Modern Worldwide Communications through Web Site, E-mail, and Fax
- Reasonable Cost, Free Estimates and Quotations, and Competitive Rates
- Mindfulness to Functionality, Efficiency, and Detail
- Optimization Services and Innovative Solutions Provided
- Stamped Drawings by a Registered Professional Engineer (P. E.)



We reviewed the mooring structure analysis...also performed our own computer analysis to verify their (*Hawaii Marine*) numbers. The analysis was very thorough and well-done... We find that all components are satisfactorily designed...We recommend approval of the mooring of the drydock..." *John Cecilio, Naval Facilities Engineering Command*

"Mr. Whiting (*Senior Surveyor of Lloyd's Register of Shipping*) said he had been particularly impressed by your detailed, well itemized, thoroughly documented reports and proposals...Of course, I have had even greater opportunity to see the level of excellence in your extensive input..." *J. P. Muhlbauer, All Ship & Cargo Surveys, Limited*

For more details visit *Hawaii Marine's* web site at [www.hawaii-marine.com](http://www.hawaii-marine.com) or email us at [bt@atah.net](mailto:bt@atah.net).

**HAWAII MARINE COMPANY**  
45 - 302 MAKALANI STREET  
KANEOHE, HI 96744 – 2819  
U. S. A.

PHONE/FAX (808) 247-6443  
CELL PHONE (808) 291-0348  
EMERGENCIES (808) 235-0870

Brochure, Rev. B, Last Updated 7-23-07